

**The Bass (Specified Areas) (Prohibition
of Fishing) (& Variation) Order 1990
(Bass Nursery Areas)**

Please see The Bass Order 1990 and The Bass (Variation) Order 1999 legislation for full details of the legislation and specified areas within the Southern IFCA district.

“Prohibition

*Fishing for bass (*Dicentrarchus labrax*), or fishing for any species of sea-fish using sand-eels (*Ammodytidae*) as bait, by any fishing boat within any part of the areas described in column 1 of the Schedule to this Order is prohibited during the period specified in relation to each area in column 2 thereof.”*

AREAS AND SPECIFIED PERIODS IN RESPECT OF WHICH PROHIBITION OF FISHING FOR BASS APPLIES WITHIN THE SOUTHERN IFCA DISTRICT:

Chichester Harbour *Between 30 April and 1 November*

All tidal waters enclosed by a line drawn 192° true from Eastoke Point to Chichester Bar Beacon, then 078° true to Cakeham Tower

Langstone Harbour *Between 30 April and 1 November*

All tidal waters enclosed by a line drawn 153° true from the Gunnery Range Light at Eastney Point to Langstone Fairway Buoy (50° 46.25N 01° 01.27W), then 033° true to the foreshore east of Gunner Point

Portsmouth Harbour *Between 30 April and 1 November*

All tidal waters enclosed by a line drawn from Gilkicker Point to Southsea Castle

Southampton Water *Between 30 April and 1 November*

All tidal waters enclosed by a line drawn 090° true from the Cadland foreshore to the Warsash foreshore passing through the north-west extremity of the Esso tanker jetty but excluding those waters above the Redbridge Causeway on the River Test

Fawley Power Station *All year*

The area enclosed by a circle drawn with a radius of 556 metres around the outfall from Fawley Power Station

Poole Harbour *Between 30 April and 1 November*

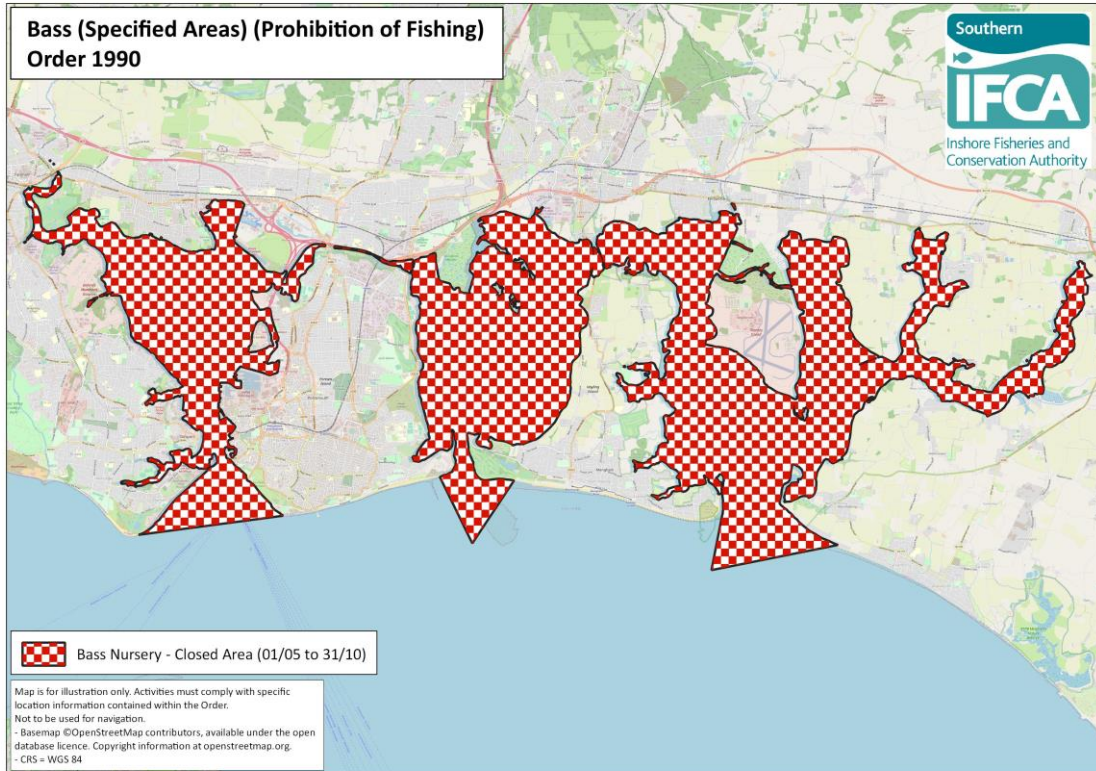
All tidal waters enclosed by a line drawn 011° true from Jerry's Point, through Branksea Castle to Salterns Pier

The Fleet *All year*

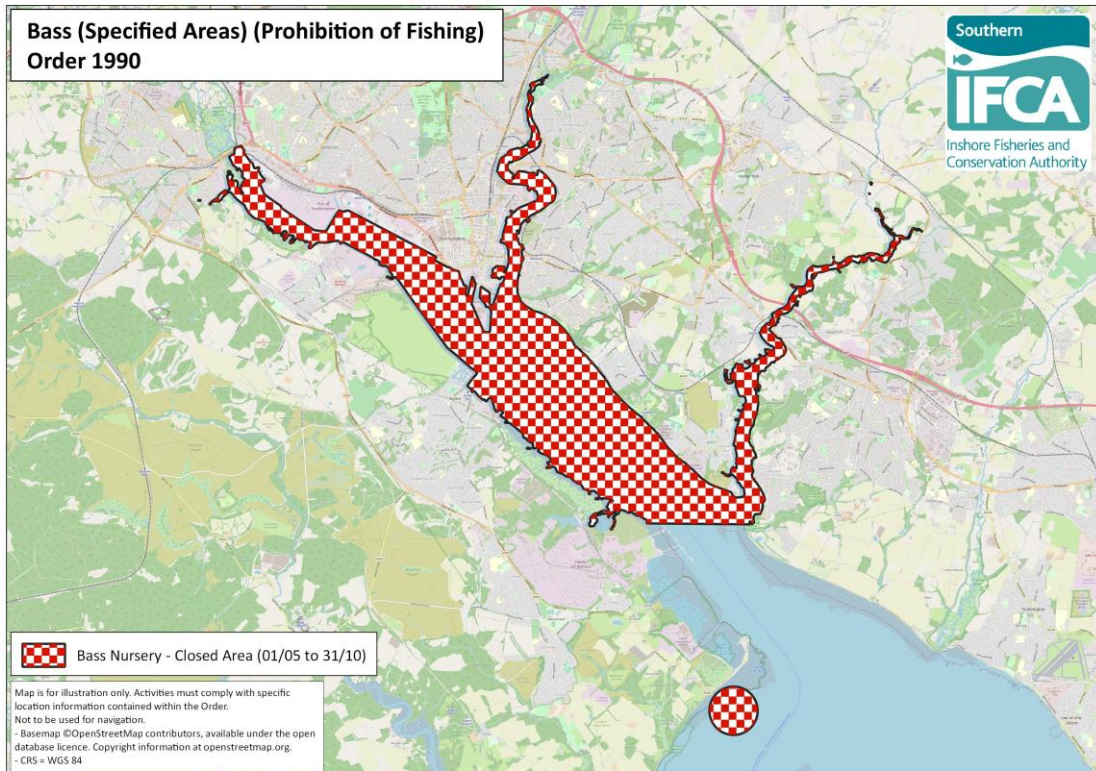
All tidal waters of the Fleet inside Ferry Bridge

SOUTHERN INSHORE FISHERIES AND CONSERVATION AUTHORITY

Portsmouth Harbour, Langstone Harbour and Chichester Harbour:

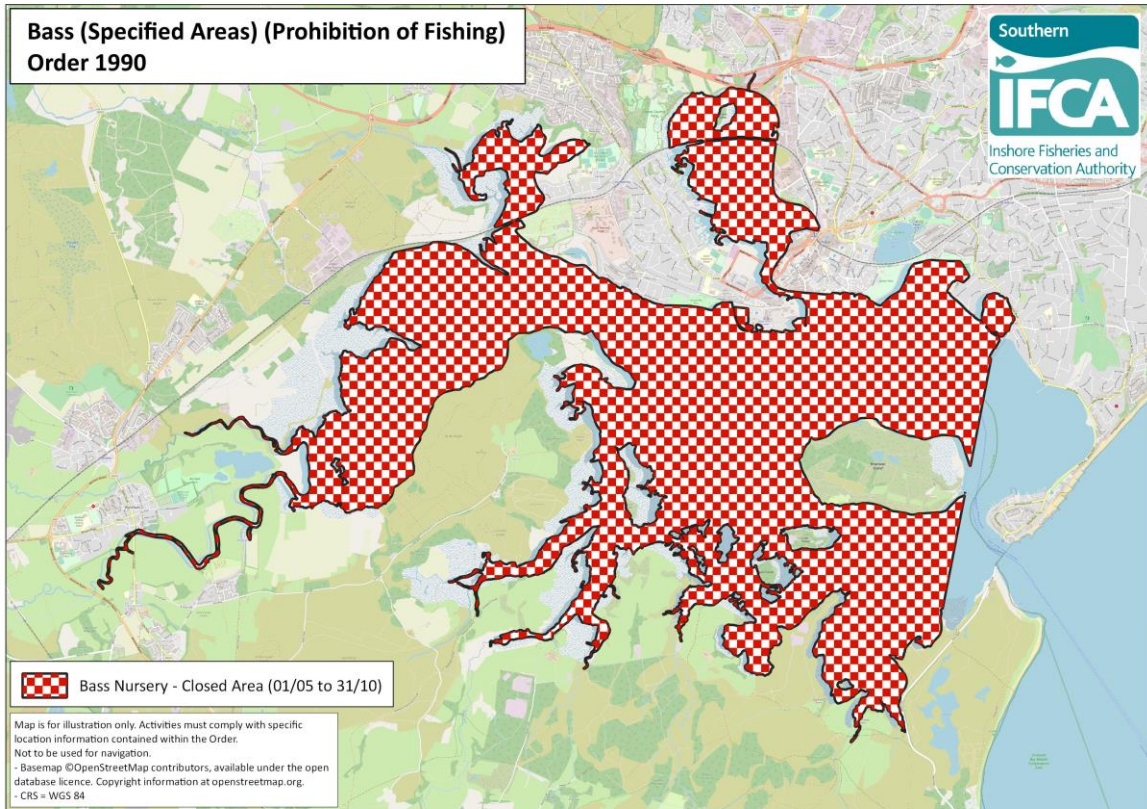


Southampton Water and Fawley Power Station:



SOUTHERN INSHORE FISHERIES AND CONSERVATION AUTHORITY

Poole Harbour:



The Fleet:

