



PROGRAMME OPPORTUNITIES

TAKE PART IN UK SCIENCE AT SEA INITIATIVES



CALLING ALL VESSELS TRAVELLING AROUND THE UK



Tracking South Coast Bottlenose Dolphin Movements in Sussex *With the Sussex Dolphin Project*

This project focuses on studying an isolated group of bottlenose dolphins living along the UK south coast. The goal is to better understand the population's size, behaviour, ecology, assess the impact of human activity on their survival, and build stronger evidence to support their conservation. Find out more [here](#).

Time of Expedition: May 2025 - Ongoing

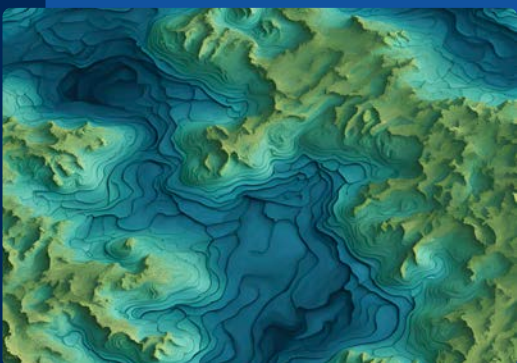
Location of Project: Sussex, UK

Sussex Bay Kelp and Sediment Research *With The University of Sussex*

This project aims to investigate how suspended sediments in Sussex Bay affect the growth and regeneration of native kelp forests. This study supports the broader work of the Sussex Kelp Restoration Project, which monitors and restores kelp ecosystems in the region. Find out more [here](#).

Time of Expedition: January 2025 - September 2026

Location of Project: Sussex Bay, UK



Seabed 2030 Project *With the Nippon Foundation and GEBCO*

Seabed 2030 seeks to inspire the complete mapping of the world's ocean by 2030, and to compile all the data into the freely available GEBCO Ocean Map. This Citizen Science project is formally endorsed as a Decade Action of the UN Ocean Decade. Find out more [here](#).

Time of Expedition: Ongoing

Location of Project: Global Oceans

ORCA OceanWatchers *With Organisation Cetacea*

This Citizen Science project encourages captains, crew and their guests to collect effort-based cetacean sightings data to monitor important habitats and identify hotspots, so researchers can continue to drive policy and help create protected areas to safeguard these amazing animals for the future. Find out more [here](#).

Time of Expedition: Ongoing

Location of Project: Global Oceans

